

CUST. MODEL:	REF.
CUST. P/N:	DWG FILE:

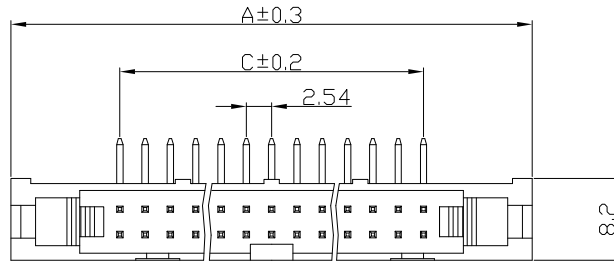
DESCRIPTION CONTROL			
REV.	DESC.	DATE	APP.

POSITION	A	B	C
10	32.00	21.84	10.16
12	34.54	24.38	12.70
14	37.08	26.92	15.24
16	39.62	29.46	17.78
20	44.70	34.54	22.86
24	49.78	39.62	27.94
26	52.32	42.16	30.84
30	57.40	47.24	35.56
34	62.48	52.32	40.64
40	70.10	59.94	48.26
50	82.80	72.64	60.96
60	95.50	85.34	73.66
64	100.58	90.42	78.74

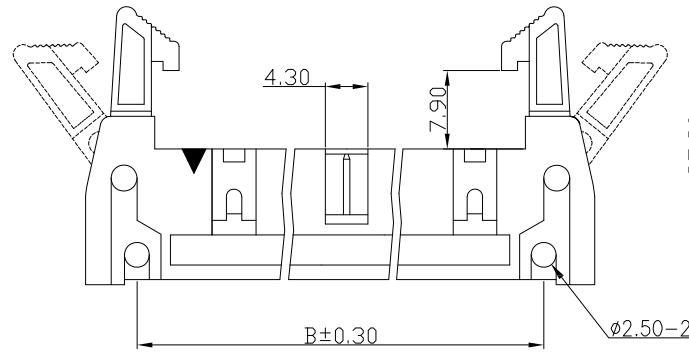
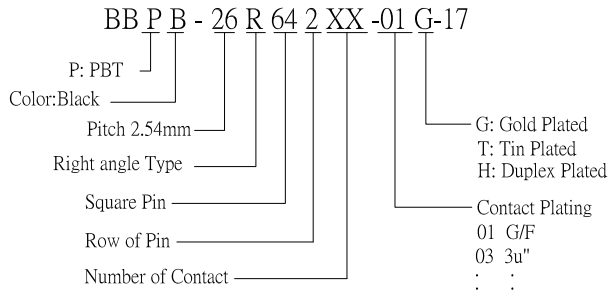
**SPECIFICATIONS**

Material  
 Insulator: PBT UL94V-0  
 Contact: Brass, Gold flash plated

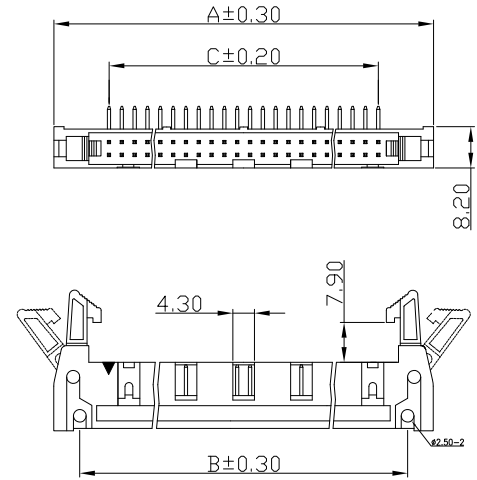
Electrical  
 Voltage Rating: 250 VAC/rms 60Hz  
 Current Rating: 3Amp  
 Contact Resistance: 30mΩ max.  
 Insulation Resistance: 1000MΩ min. at 1000VDC  
 Dielectric Withstanding Voltage: 1000VAC for 1 minute  
 Operating Temperature: -55°C to +105°C



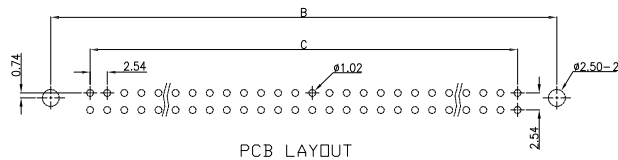
**RoHS Compliance**

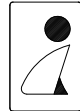
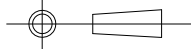


10-50 PIN



60&64 PIN



UNLESS OTHERWISE SPECIFIED SURFACE FINISH ALL OVER TOLERANCES mm	DRAW:	DATE:	TITLE: <b>BOX HEADER RIGHT ANGLE WITH LATCH 2.54mm</b>
	<i>Chubby</i>	22/09/04	
	METRIC	CHECK:	APPROVE:
.X = ±0.30	KEVIN	<i>TONY</i>	 <b>誠州電子有限公司</b> <i>Sincere State Electronics Co., Ltd.</i>
.XX = ±0.20			

NO	DESCRIPTION	QTY
----	-------------	-----